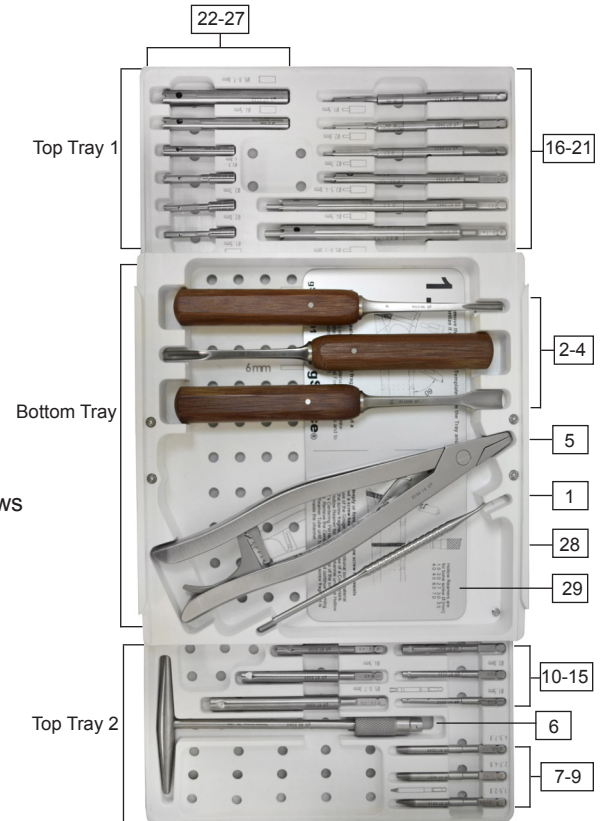


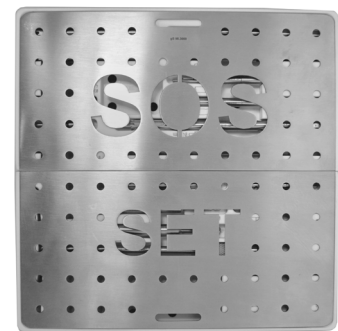
Useful for removal of damaged and broken bone screws.

Pictured components:

1. **gS 11.9525** Sharp Hook 6 1/4", grooved handle
2. **gS 56.0104** Mini Lexer Gouge 7", 4mm, phenolic handle
3. **gS 56.0106** Mini Lexer Gouge 7", 6mm, phenolic handle
4. **gS 56.0110** Mini Lexer Gouge 7", 10mm, phenolic handle
5. **gS 81.8608** Screw Holding Forceps 8" with ratchet
6. **gS 86.0060** T-Handle 6", SQC (small quick coupling)
7. **gS 87.5215** Conical Screw Extractor 65mm for 1.5/2.0mm screws
8. **gS 87.5227** Conical Screw Extractor 65mm for 2.7/3.5/4.0mm screws
9. **gS 87.5245** Conical Screw Extractor 65mm for 4.5/5.0/6.5/7.0mm screws
10. **gS 87.5315** Extraction Bolt 60mm for 1.5mm screws
11. **gS 87.5320** Extraction Bolt 60mm for 2.0mm screws
12. **gS 87.5327** Extraction Bolt 60mm for 2.7mm screws
13. **gS 87.5335** Extraction Bolt 60mm for 3.5/4.0mm screws
14. **gS 87.5345** Extraction Bolt 80mm for 4.5mm screws
15. **gS 87.5350** Extraction Bolt 100mm for 5.0/6.5/7.0mm screws
16. **gS 87.5415** Hollow Reamer 105mm for 1.5mm screws
17. **gS 87.5420** Hollow Reamer 105mm for 2.0mm screws
18. **gS 87.5427** Hollow Reamer 105mm for 2.7mm screws
19. **gS 87.5435** Hollow Reamer 105mm for 3.5/4.0mm screws
20. **gS 87.5445** Hollow Reamer 137mm for 4.5mm screws
21. **gS 87.5450** Hollow Reamer 137mm for 5.0/6.5/7.0mm screws
22. **gS 87.5515** Spare Reamer 40mm (Reamer Tube) for Hollow Reamer 1.5mm
23. **gS 87.5520** Spare Reamer 40mm (Reamer Tube) for Hollow Reamer 2.0mm
24. **gS 87.5527** Spare Reamer 40mm (Reamer Tube) for Hollow Reamer 2.7mm
25. **gS 87.5535** Spare Reamer 40mm (Reamer Tube) for Hollow Reamer 3.5/4.0mm
26. **gS 87.5545** Spare Reamer 70mm (Reamer Tube) for Hollow Reamer 4.5mm
27. **gS 87.5550** Spare Reamer 70mm (Reamer Tube) for Hollow Reamer 5.0/6.5/7.0mm
28. **gS 98.3000** SES Tray 8 1/4", stainless steel cover, plastic tray, white
29. **gS 98.3001** SES Instruction Template, 200mmx96mm, aluminum



Tray in open position with cover removed.
3 separate trays - Top Trays 1 and 2,
Bottom Tray



Tray in closed position.
210mm x 210mm x 42mm

Screw Extraction Set (SES)

For more information contact:

gSource, LLC
19 Bland Street
Emerson, NJ 07630
USA

P (800) 978-1119
(201) 599-2277
F (201) 599-3306
E email@gSource.com
www.gSource.com



ISO 13485 Certified
FS 589741
FDA Registered